

03 | KRITERIA



FLAT VERSION



CAPITONNÉ VERSION

Poltrona direzionale con schienale alto e medio nelle versioni:

- fisse, con movimento synchron, con oscillante "knee tilt"
- rivestimenti mono o bicolore:
- lisci senza cuciture LS
- con cuciture capitonné CP

Managerial armchair with high and medium backrest, available in the versions:

- fixed, with synchron mechanism, with "knee-tilt" mechanism
- one or two-colours upholstery:
- flat, without stitching LS
- with capitonné stitching CP

Fauteuil direction avec dossier haut et moyen, disponible dans les versions:

- dossier fixe (pas basculante), avec mécanisme synchron, avec mécanisme basculante "knee-tilt"
- revêtements unicolore ou deux couleurs:
- sans coutures LS
- avec capitonnage CP

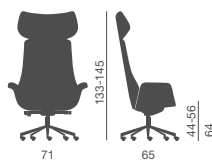
Chefsessel mit höher und mittlerer Rückenlehne in den folgenden

Ausführungen erhältlich:

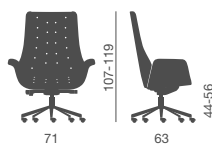
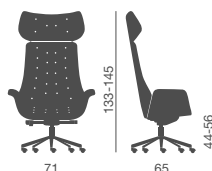
- fest, mit Synchronmechanik, mit „knee-tilt“ Mechanik
- einfarbig oder zweifarbig:
- glatt ohne Steppung LS
- mit Capitonné Steppung CP

Sillón direccional con respaldo alto o medio en las versiones:

- fijas, con mecanismo synchron, con basculante "knee-tilt"
- revestimiento monocolor o bicolor:
- lisos sin costuras LS
- con costuras capitonné CP



Schienale liscio senza cuciture LS
Flat backrest, without stitching LS



Schienale con cuciture capitonné CP
Backrest with capitonné stitching CP



Versioni fisse - Alzo gas
Fixed versions - Gaslift



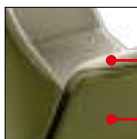
Versioni Synchron
Synchron version



Versione oscillante
"Knee Tilt"
"Knee Tilt" version



Monocolore
One color



Bicolore
Two colours
1° codice/1st code
2° codice/2nd code



MECCANISMI
MECHANISMS

A

Categoria Category

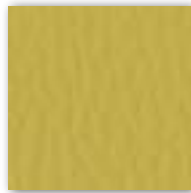
Resistenza alla fiamma - Fire resistance
Certificato Classe 1 UNI 9175 CL. 1 IM
87,5% P.V.C. plastificato - 12,5% cotone
(Martindale 100.000)



A 31 F



A 32 F



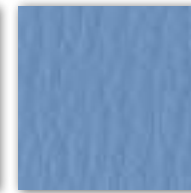
A 29 F



A 37 F



A 28 F



A 30 F



A 35 F



A 26 F



A 34 F



A 38 F



A 39 F



A 36 F



A 27 F

C

Categoria Category

SKILL/SECRET
Resistenza alla fiamma - Fire resistance
Certificato Classe 1 UNI 9175 CL. 1IM - EN 1021 - BS 5852
69% P.V.C. plastificato - 30% cotone - 1% poliuretano
(Martindale 50.000)



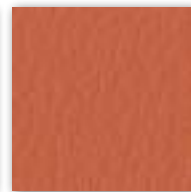
C 40 F



C 41 F



C 42 F



C 43 F



C 44 F



C 45 F



C 46 F



C 47 F



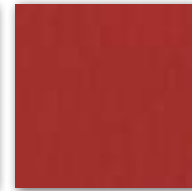
C 48 F



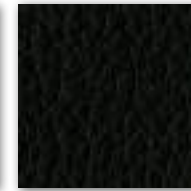
C 49 F



C 50 F



C 51 F

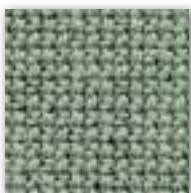


C 52 F

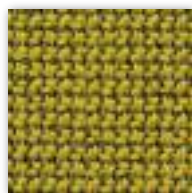
C

Categoria Category

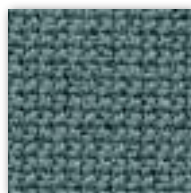
Material: 98% post consumer recycled polyester - 2% polyester
Flammability: EN 1021 1&2 · BS 5852 0&1 CA · TB 117-2013.
Will also pass other flammability standards.
Flame retardant performance is dependent upon the foam used.
Contain no Flame Retardant chemical.
Abrasion resistance: rubs · BS EN 14465 · BS EN ISO 12947-2 (Martindale 100.000)



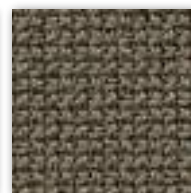
C 30 C



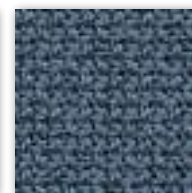
C 31 C



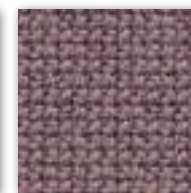
C 32 C



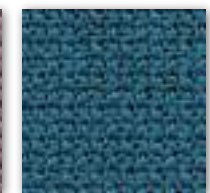
C 33 C



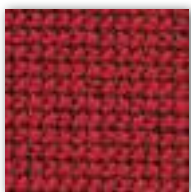
C 34 C



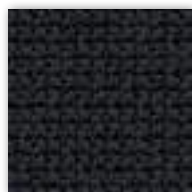
C 35 C



C 36 C



C 37 C



C 38 C

C

Categoria Category

Tessuto altamente ignifugo
Certificato Classe 1 Ministero dell'Interno
Fireproof fabric - Tissu non feu
Brandfester Bezug - Tela ignifuga
100% Poliestere Trevira CS
(Martindale 70.000)



C 381



C 38 T



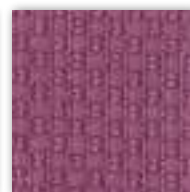
C 383



C 380



C 385



C 38 L



C 38 H



C 382



C 386



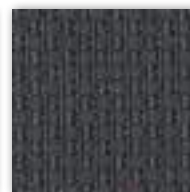
C 387



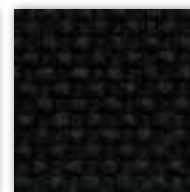
C-38



C 384



C 38 A



C 388



C 38 G



C 38 M



C 38 P

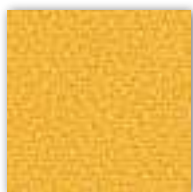
C

Categoria Category

Tessuto altamente ignifugo
Certificato Classe 1 Ministero dell'Interno
Fireproof fabric - Tissu non feu
Brandfester Bezug - Tela ignifuga
100% Xtreme FR®
(Martindale 100.000)



C 335



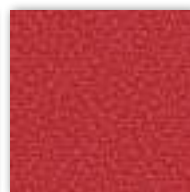
C 336



C 332



C 334



C 329



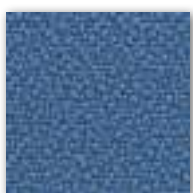
C 337



C 327 (Dark brown)



C 340



C 325



C 326



C 330



C 331



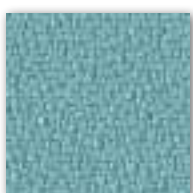
C 324



C 328



C 349



C 333



C 338

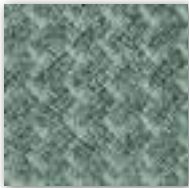
D

Categoria Category

Post consumer recycled polyester 98%
Polyester 2%
Flammability EN 1021 1&2
BS 5852 0&1 · CA TB 117-2013
(Martindale 100.000)



D 51B



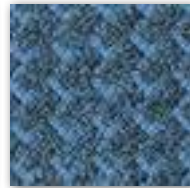
D 52B



D 53B



D 54B



D 55B



D 56B



D 57B



D 58B



D 59B

D

Categoria Category

Resistenza alla fiamma - Fire resistance
Certificato Classe 1 IM EN 1021 Part. 1-2
75% Lana - 25% Poliammide / 75% Wool - 25% Polyamide
(Martindale 100.000)



D 501



D 502



D 503



D 504



D 505



D 506



D 507



D 508



D 509

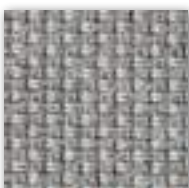
D

Categoria Category

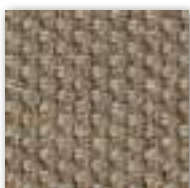
100% post-consumer recycled polyester
Abrasion: rubs (EN ISO 12947-2) Martindale 120.000
Flammability: BS EN 1021 1&2 Cigarette and Match CA TB
117-2013



D 40Y



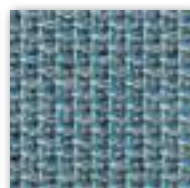
D 41Y



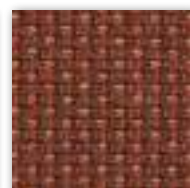
D 42Y



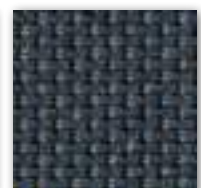
D 43Y



D 44Y



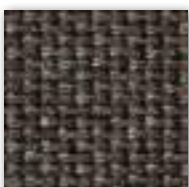
D 45Y



D 46Y



D 47Y



D 48Y

D

Categoria Category

Trattamento antimicrobico - Antimicrobial treatment
Impermeabilità-Waterproof
Resistenza fiamma-Fire resistance
UNI 9175/87 CL.1IM - EN 1021 BS 5852
63% Poliuretano / Polyurethane - 29% Cotone - Cotton 8% PES
IMO A. 652
(Martindale 150.000)



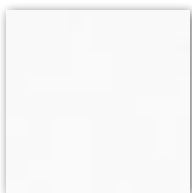
D 420



D 426



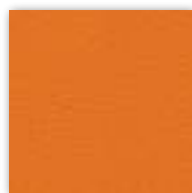
D 430



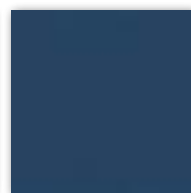
D 427



D 431



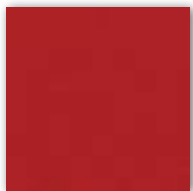
D 421



D 423



D 432



D 422



D 425



D 428 (Dark brown)



D 424



D 429

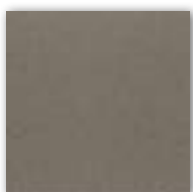
D

Categoria Category

Trattamento antimicrobico - Antimicrobial treatment
Impermeabilità-Waterproof
Resistenza fiamma-Fire resistance
UNI 9175/87 CL.1IM - EN 1021 BS 5852
63% Poliuretano / Polyurethane - 29% Cotone - Cotton 8% PES
IMO A. 652
(Martindale 150.000)



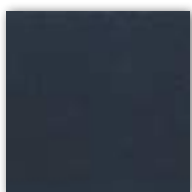
D 470



D 471



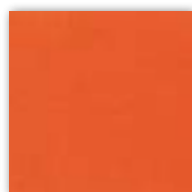
D 472



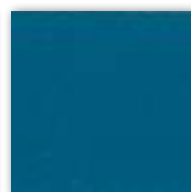
D 473



D 474



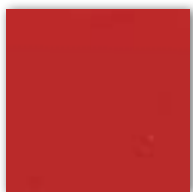
D 475



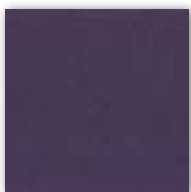
D 476



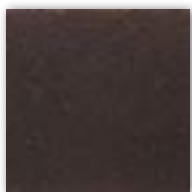
D 477



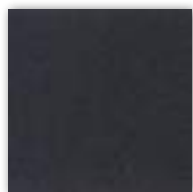
D 478



D 479



D 480 (Dark brown)



D 481



D 482

D

Categoria Category

Tessuto ignifugo - Fireproof fabric - Tissu non feu - Brandfester Bezug - Tela ignifuga
Classe 1IM - DIN 4102 B2 - NF P 92-503/M2
100% Vinyl-compound - 100% Polyester Ultra Hi-Loft™ Backing
PERMABLOK® - Waterproof
(Martindale > 100.000)



D 801



D 802



D 803



D 804



D 805



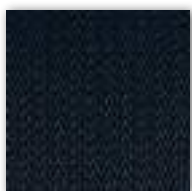
D 806



D 807



D 808

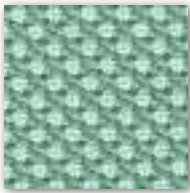


D 809

D

Categoria Category

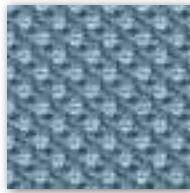
Material: 100% post consumer recycled poliester
 Flammability: EN 1021 1&2 - BS 5852 0&1 Classe 1 - CA TB 117-2013.
 Will also pass other flammability standards.
 Flame retardant performance is dependent upon the foam used.
 Abrasion resistance: rubs - EN ISO 12947-2 (Martindale 100.000)



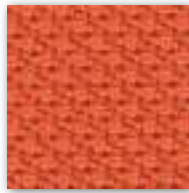
D 40R



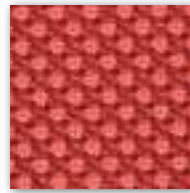
D 41R



D 42R



D 43R



D 44R



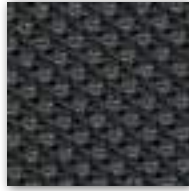
D 45R



D 46R



D 47R



D 48R

P

Categoria Category

Vera pelle - Genuine leather
 Cuir - Leder - Piel auténtica
 A richiesta disponibili altri colori.
 By request any other colours available.



P 901



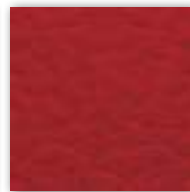
P 915



P 920



P 917



P 909



P 905



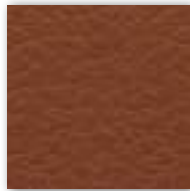
P 911



P 910



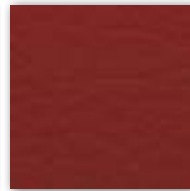
P 912



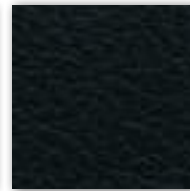
P 908



P 902 (Dark brown)



P 914



P 903

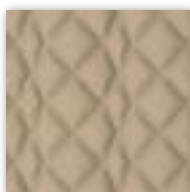
Solo per schienale trapuntato modello
 Only for quilted back model

KLINT

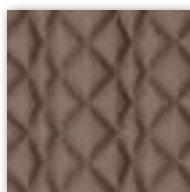
SKILL
 Resistenza alla fiamma - Fire resistance
 Certificato Classe 1 UNI 9175 CL. 1IM - EN 1021 - BS 5852
 69% P.V.C. plastificato - 30% cotone - 1% poliuretano
 (Martindale 50.000)



40T



41T



49T



52T

Solo per modello
 Only for model

KEY LINE

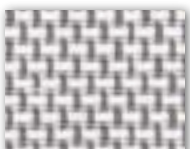
Rete-Mesh-Resille-Membran-Red
 70% Polyester - 30% Polyamid
 Flammability: EN 1021:2014 part 1
 (cigarette test)
 (Martindale 170.000)

4902 SHRINX

Solo per modello
 Only for model

KROMA, KUPER, KONTAT KARMA, KORIUUM, KOSMO

Rete - Mesh - Resille
 Membran - Red
 64% PL - 36% PA
 Martindale 100,000



B BEIGE



G GRIGIO/GREY



V VERDE/GREEN



N NERO/BLACK



D 218



D 221



D 222